

A large crowd of people at a night festival. In the background, a Ferris wheel is visible, illuminated against the dark sky. The crowd is dense, and many people have their arms raised. The scene is lit with warm, orange-toned lights, likely from the festival's stage or lighting rigs.

 polk[®]



Custom Installation

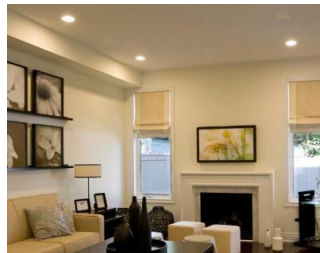
opolk

A SOUND UNITED BRAND

V Series

Virtually invisible
Slim Grill
Aimable Tweeter

In-house



V60, V60(slim)



V6S



V80



V65



V85

RCi Series SC Series

Moisture-Resistant
Aimable Tweeter

Bathrooms
Kitchen
Covered Porches



RC6s



RC60i



RC80i



RC55i



RC65i



SC60

* SC60 EOL 2021

Atrium

All-weather certified

Bathrooms
Kitchen
Covered Porches



Atrium 8 SDI



Atrium 6



Atrium 5



Atrium 4



Atrium Sub100



Atrium Sat 300

OWM Series

Multi way of
install

Multi Application



OWM5



OWM3

Product Info

- ✓ Virtually invisible installations with Polk's 5mm wafer-thin Sheer Grille™ design
- ✓ 0.6mm perforated acoustically inert openings that virtually disappear when installed.
- ✓ *(NOTE: Grilles are metal. Avoid high moisture installations)*
- ✓ Unique swivel tweeter housing to aim high frequencies into the listening area for better imaging
- ✓ Shallow version of 6.5" in-ceiling available without tweeter bridge
- ✓ Optional Sheer Square Grilles are available for In- Ceiling models





V60 (slim)
0.75" aimable tweeter
6.5" Mid/Woofer



V6S
2x 0.75" aimable tweeters
6.5" Mid/Woofer



V80
1" aimable tweeter
8" Mid/Woofer



V65
1" aimable tweeter
6.5" Mid/Woofer



V85
1" aimable tweeter
8" Mid/Woofer



RC6s

2x 0.75" tweeters
1x 6.5" Mid/Woofer



RC60i

0.75" aimable tweeter
6.5" Mid/Woofer



RC80i

1" aimable tweeter
8" Mid/Woofer



RC55i

0.75" aimable tweeter
5.25" Mid/Woofer



RC65i

0.75" aimable tweeter
6.5" Mid/Woofer



SC60

0.75" aimable tweeter
6.5" Mid/Woofer

Moisture-resistant
Matt white (paintable)

- ✓ Broad coverage baffle design
- ✓ Patented water-resistant Power Port bass
- ✓ Durable, mineral-filled polypropylene cabinet design
- ✓ Patented Dynamic Balance® and Klippel optimization technologies
- ✓ All-weather certified, Atrium Series speakers exceed baseline industrial and military specifications
- ✓ Aluminum grilles and bracket
- ✓ Speed-Lock mounting system ensures easy, safe one handed installations and no-slip setting of the speaker angle





Atrium 8 SDI

6.5" Woofer
Switchable for
Single-Channel
Stereo use



Atrium 6

5.25" Woofer



Atrium 5

5" Woofer



Atrium 4

4" Woofer

Environmental Standards :

ASTM D5894-UV Salt Fog, Mil Standard 810 Immersion,
Mil-Std 883 Method 1009.8 for salt and corrosion



Metal Security Plate

KEY FEATURES:

Two-way speaker design:
0.75" Dynamic Balance polyurethane tweeter
Flying bridge-mounted

IPX66 Water proof design

3.5" Dynamic Balance driver with 1" voice coil
With Dynamic Balance® driver technology

Frequency Response: 100Hz-22k
Sensitivity: 83dB
Max power handling: 100W

Including all the mounting hardware
Color: Chestnut brown, paintable

Pendant installation



On wall





KEY FEATURES:

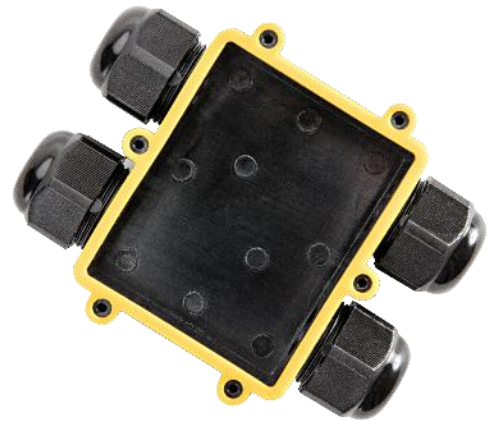
200W down-firing subwoofer (passive), IPX66 Water proof design

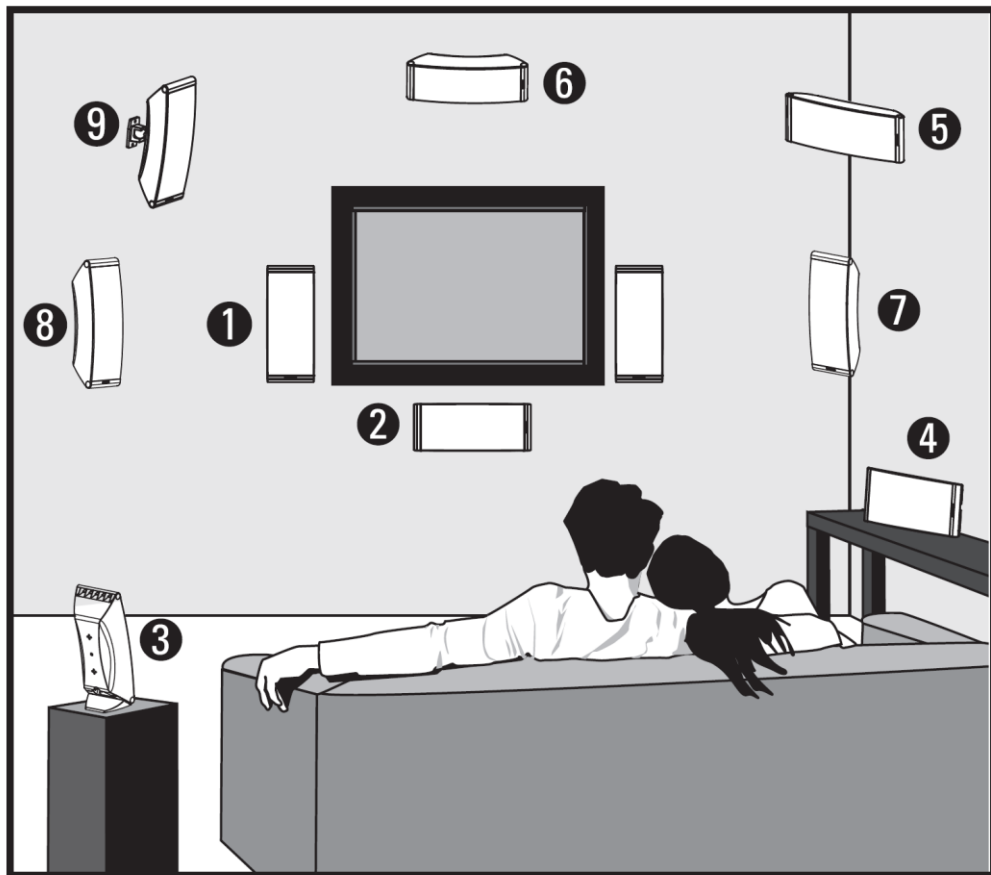
10" Long-throw Dynamic Balance® driver technology
Dual 2" voice coil design for stereo input

Sensitivity: 88dB

Including metal grille and underground junction box Color:
Terracotta & Cool Gray, paintable







1. Vertical wall mount



2. Horizontal wall mount



3. Vertical shelf mount



4. Horizontal shelf mount



5. Corner wall mount



6. Horizontal ceiling mount



7. Vertical corner wall mount



8. Vertical 45° wall mount



9. 3rd party wall mount bracket



OWM3
1" tweeter
4.5" Mid/Woofer



OWM5
1" tweeter
2x 4.5" Mid/Woofers