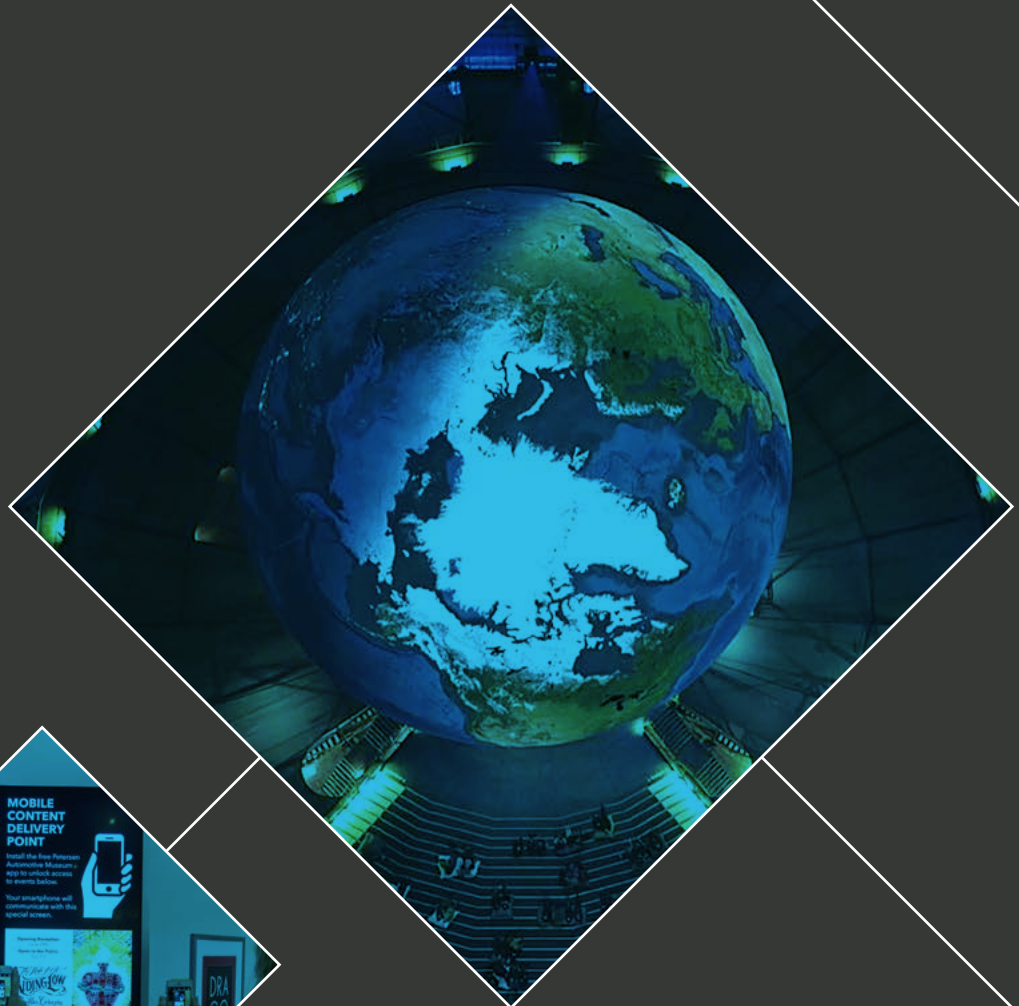


 THE FREEDOM
TO CREATE



PRELIMINARY BROCHURE

February 2018



Projectors

■ PT-RQ22K

3-Chip DLP™ Projector

■ PT-RZ120

1-Chip DLP™ Projector

■ PT-RZ870

1-Chip DLP™ Projector

■ PT-MZ770 Series

LCD Projectors

■ PT-VW360 Series

LCD Projectors

Flat-Panel Displays

■ EQ1 Series

4K LCD Displays

Compact and Filterless 21 klm*¹ 4K+ 3-Chip DLP™ Projector Leverages SOLID SHINE Laser Technology for Awesome Large-Format Pictures and Low TCO



PT-RQ22K	
Brightness	21,000 lm (Center)* ¹ / 20,000 lm* ²
Resolution	4K+ (5120 x 3200)* ³
Contrast	20,000:1

Flagship 4K+ Imaging Performance

- Harnesses next-generation 3-Chip DLP™ imaging system with Panasonic SOLID SHINE Laser technology for bright and film-like picture reproduction
- High 21,000 lm*¹ brightness in a compact, lightweight, and easy-to-handle body
- Quad Pixel Drive produces supremely detailed 4K+ images
- Real Motion Processor 240 Hz frame interpolation achieves fluid reproduction of fast-paced action sequences
- Features 4K BT.2020 color-space emulation and supports HDR standard for accurate handling of next-generation video formats
- Efficient heat-pipe-based cooling system assures stability and long life

Peak Performance Extended for Low TCO

- Minimal maintenance required for continuous 24/7 projection applications
- Dust-resistant design features hermetically shielded optical unit and cost-saving filterless cooling system
- Digital laser light-source modulation achieves high 20,000:1 dynamic contrast
- Detail Clarity Processor 5+ technology with 4K optimization to enhance detail expression with all video sources
- System Daylight View 3 boosts image sharpness in projection mapping applications and in bright environments

Flexible Installation and System Integration

- Two slots for optional SLOT NX terminal boards suiting various applications
- Supports 12G SDI Interface Board (ET-MDN12G10)
- Shares optional lenses with Panasonic 3-Chip DLP™ projector family including ultra-short-throw and fisheye lenses
- Compact body and free 360-degree installation (vertical and horizontal)
- 4K DIGITAL LINK supports transmission of uncompressed 4K video signals and control commands through single LAN cable
- Multi-Screen Support System blends and calibrates multiple screens
- Multi-Unit Brightness and Color Control
- Free Geometry Manager Pro software with optional Upgrade Kit (ET-UK20)
- Supports Auto Screen Adjustment Upgrade Kit (ET-CUK10)

Specifications (Tentative)

Model	PT-RQ22K	
DLP™ chip	Panel size	22.9 mm (0.9 in) diagonal (16:10 aspect ratio)
	Display method	DLP™ chip x 3, DLP™ projection system
	Pixels	49,152,000 (12,288,000 x 4) pixels with Quad Pixel Drive set to ON, 4,096,000 (2560 x 1600) x 3, total of 12,288,000 pixels with Quad Pixel Drive set to OFF
Refresh rate	240 Hz*1	
Lens	Optional (no lens included with this model)	
Light source	Laser diodes (Laser class: Class 1) (Class 3R for US models), Light source life: 20,000 hours (NORMAL mode, brightness decreases to approx. 50 %)	
Screen size (diagonal)	1.78–25.4 m (70–1,000 in) with 16:10 aspect ratio 1.78–15.24 m (70–600 in) with the ET-D75LE8 / ET-D3LET80, 16:10 aspect ratio 3.05–15.24 m (120–600 in) with the ET-D75LE95, 16:10 aspect ratio	
Brightness	21,000 lm (Center)*2 / 20,000 lm*3 (HIGH Mode)*4	
Center-to-corner uniformity*3	90 %	
Contrast*3	20,000:1 (Full On/Full Off, Dynamic Contrast Mode: 3)	
Resolution	4K+ (5120 x 3200) (Quad Pixel Drive: ON)	
Optical axis shift*5	Vertical (from center of screen)	±59 % (±56 % with ET-D75LE6 / ET-D3LEW60, +69 % – +84 % with ET-D75LE95) (powered)
	Horizontal (from center of screen)	±29 % (±19 % with ET-D75LE6 / ET-D3LEW60, ±21 % with ET-D75LE95) (powered)
Keystone correction range	Vertical: ±40° (± 22° with ET-D75LE50 / ET-D3LEW50, ±28° with ET-D75LE6 / ET-D3LEW60, +5° with ET-D75LE95), Horizontal: ±15° (0° with ET-D75LE95)	
Keystone correction range with optional Upgrade Kit ET-UK20	Vertical: ±45° (± 40° with ET-D75LE10 / ET-D3LEW10, ET-D75LE20 / ET-D3LES20, ±22° with ET-D75LE50 / ET-D3LEW50, ±28° with ET-D75LE6 / ET-D3LEW60, +5° with ET-D75LE95) Horizontal: ±40° (±15° with ET-D75LE50 / ET-D3LEW50, ET-D75LE6 / ET-D3LEW60, ET-D75LE10 / ET-D3LEW10, 0° with ET-D75LE95), Up to a total of ±30° during simultaneous horizontal and vertical correction	
Installation	Horizontal/vertical, free 360-degree installation	
Terminals	SDI 1 IN	BNC x 1: 3G/HD/SD-SDI input, Dual-link HD-SDI (Link-A), Dual-link 3G-SDI (Link 1), Quad-link HD-SDI (Link 1), Quad-link 3G-SDI (Link 1)
	SDI 2 IN	BNC x 1: 3G/HD/SD-SDI input, Dual-link HD-SDI (Link-B), Dual-link 3G-SDI (Link 2), Quad-link HD-SDI (Link 2), Quad-link 3G-SDI (Link 2)
	SDI 3 IN	BNC x 1: 3G/HD/SD-SDI input, Dual-link HD-SDI (Link-C), Dual-link 3G-SDI (Link 3), Quad-link HD-SDI (Link 3), Quad-link 3G-SDI (Link 3)
	SDI 4 IN	BNC x 1: 3G/HD/SD-SDI input, Dual-link HD-SDI (Link-D), Dual-link 3G-SDI (Link 4), Quad-link HD-SDI (Link 4), Quad-link 3G-SDI (Link 4)
	MULTI PROJECTOR SYNC IN	BNC x 1
	MULTI PROJECTOR SYNC OUT	BNC x 1
	SERIAL IN	D-sub 9-pin (female) x 1 for external control (RS-232C compliant)
	SERIAL OUT	D-sub 9-pin (male) x 1 for link control
	REMOTE 1 IN	M3 x 1 for wired remote control, link control
	REMOTE 1 OUT	M3 x 1 for wired remote control, link control
	REMOTE 2 IN	D-sub 9-pin (female) x 1 for external control (parallel)
	LAN/DIGITAL LINK	RJ-45 x 1 for network, DIGITAL LINK connection (HDBase™ compliant), 100Base-TX, compatible with Art-Net, PjLink™ (Class 2), Deep Color, HDCP2.2
	DC OUT	USB Type A x 2 (for power supply DC 5V total of 2 A)
	Expansion Slot	SLOT 1 / SLOT 2 (total two terminals, vacant) for interface boards, SLOT NX compatible
	Power supply	AC 200–240 V, 50/60 Hz; AC 100–200 V, 50/60 Hz (brightness is restricted with lower voltage)
Power consumption	TBD	
Cabinet materials	Molded plastic	
Dimensions (W x H x D)	598 x 270 x 725 mm (23 1/32" x 10 5/8" x 28 17/32") (not including protruding parts)	
Weight*6	Approx. 55 kg (122 lbs)	
Operation noise*3	TBD	
Operating environment	Operating temperature: 0–45 °C (32–113 °F)*7, operating humidity: 10–80 % (no condensation)	
Applicable software	Logo Transfer Software, Multi Monitoring & Control Software, Geometry Manager Pro (ET-UK20 Upgrade Kit)	

*1 Refresh-rate varies depending on vertical scanning frequency. *2 Luminance measured at center of screen (in HIGH Mode). *3 Measurement, measuring conditions, and method of notation all comply with ISO/IEC 21118: 2012 international standards. Value is average of all products when shipped. *4 Operation in HIGH Mode may reduce maintenance timing in comparison to use in NORMAL Mode. *5 Optical axis shift is not supported on the ET-D75LE50/ET-D3LEW50. *6 Average value. May differ depending on the actual unit. *7 Light source brightness may decrease depending on operating temperature. When projector is operating at high temperature or at high altitude, brightness will decrease correspondingly.

Optional Accessories

- | | | | | | |
|---|---|---|--|---|--|
| <ul style="list-style-type: none"> ■ Fisheye Lens
ET-D3LEF70 ■ Fixed-Focus Lens
ET-D75LE50 / ET-D3LEW50,
ET-D75LE95 | <ul style="list-style-type: none"> ■ Zoom Lens
ET-D75LE6 / ET-D3LEW60,
ET-D75LE8 / ET-D3LET80,
ET-D75LE10 / ET-D3LEW10,
ET-D75LE20 / ET-D3LES20,
ET-D75LE30 / ET-D75LE40 ■ Stepping Motor Kit
ET-D75MKS10 | <ul style="list-style-type: none"> ■ Mount Bracket
ET-PKD520H/S/B ■ Frame
ET-PFD510 | <ul style="list-style-type: none"> ■ Interface Board for 12G-SDI Input (Input x 2, Output x 2)
ET-MDN12G10 ■ Interface Board for HDMI (HDCP2.2) Input (Input x 2)
ET-MDNHM10 ■ Interface Board for DVI Input (Input x 2)
ET-MDNV10 ■ Geometry Manager Pro Software Upgrade Kit
ET-UK20 | <ul style="list-style-type: none"> ■ Interface Board for 3G-SDI Input (Input x 4)
TY-TBN03G ■ Auto Screen Adjustment Upgrade Kit
ET-CUK10 | <ul style="list-style-type: none"> ■ Early Warning Software
ET-SWA100 Series |
|---|---|---|--|---|--|

Packing 12,000 lm Brightness into a Compact Body, the PT-RZ120 Dual-Drive SOLID SHINE Laser Projector Lets You Do More



PT-RZ120/L	
Resolution	WUXGA
Brightness	12,000 lm
Contrast	10,000:1

Note: PT-RZ120L offers the same performance as PT-RZ120, but comes without a lens.

High-Quality Pictures and Long-Lasting Reliability

- Combines 1-Chip DLP™ imaging with proprietary SOLID SHINE Laser technology for accurate and immersive pictures at 12,000 lm
- Dynamic Light Control for 10,000:1*1 contrast
- Accurate white balance and color reproduction in any projection mode
- High picture quality maintained for very long periods
- Detail Clarity Processor 3 clarifies and enhances the finest details
- System Daylight View 3 optimization for sharp and vivid images in bright environments

Consistently Stable and Reliable Performance

- Dust-resistant projector structure with airtight optical block
- Dual-drive laser optical engine with dual phosphor wheels assures reliable 24/7 operation with light-source failover protection
- Up to 20,000 hours of continuous maintenance-free operation*2
- Efficient cooling system for stable operation in ambient temperatures of up to 45 °C (113 °F)*3
- High-speed backup input switching prevents screen blanking during projection

Versatile System Adaptability and Flexible Installation

- Shares optional lenses with Panasonic 1-Chip DLP™ projector family
- Compact body and free 360-degree installation (vertical and horizontal)
- DIGITAL LINK/HDMI® support transmission of uncompressed 4K signal
- Built-in Geometric Adjustment for projection onto specially shaped screens
- Supports Geometry Manager Pro and optional Upgrade Kit (ET-UK20)
- Auto Screen Adjustment Upgrade Kit (ET-CUK10)
- Direct Power Off function allows projector shutdown from mains

*1 With Dynamic Contrast Mode set to 3. *2 At 20,000 hours, projector brightness will have decreased to approximately half of its original level (Dynamic Contrast Mode: 3, Image Mode: Dynamic). Panasonic recommends cleaning or checkup at point of purchase after every 20,000-hour period (approximately). Light-source lifetime may be reduced depending on environmental conditions. Replacement of parts other than the light source may be required in a shorter period. *3 Light output may be reduced to protect the projector depending on environmental conditions.

Specifications (Tentative)

Model	PT-RZ120/RZ120L	
DLP™ chip	Panel size	17.0 mm (0.67 in) diagonal (16:10 aspect ratio)
	Display method	DLP™ chip x 1, DLP™ projection system
	Pixels	2,304,000 (1920 x 1200) pixels
Lens	PT-RZ120: Powered zoom (throw ratio 1.7–2.4:1), powered focus F 1.7–1.9, f 25.6–35.7 mm PT-RZ120L: Optional powered zoom/focus lenses	
Light source	Laser diodes laser Class 1 (Class 3R for US models)	
Screen size (diagonal)	1.27–15.24 m (50–600 in), 1.27–5.08 m (50–200 in) with ET-DLE055, 2.54–8.89 m (100–350 in) with ET-DLE030, 16:10 aspect ratio	
Brightness*1	12,000 lm	
Center-to-corner uniformity*1	90 %	
Contrast*1	10,000:1 (Full On/Full Off, Dynamic Contrast Mode: ON)	
Resolution	1920 x 1200 pixels	
Optical axis shift*2	Vertical (from center of screen)	+50 %, -16 % (+40%, -16% with ET-DLE060) (powered)
	Horizontal (from center of screen)	+30 %, -10 % (+19%, -10% with ET-DLE060 / +28 %, -10 % with ET-DLE085) (powered)
Keystone correction range	Vertical: ±40° (±16° with ET-DLE060, ±22° with ET-DLE085/DLE055, +5° with ET-DLE030), Horizontal: ±15° (±10° with ET-DLE060) (cannot be operated with ET-DLE030)	
Keystone correction range with optional Upgrade Kit ET-UK20	Vertical: ±45° (±16° with ET-DLE060, ±40° with ET-DLE150/DLE250 / supplied lens, ±22° with ET-DLE085/DLE055), Horizontal: ±40° (±10° with ET-DLE060, ±15° with ET-DLE085/DLE055), Up to a total of ±55° during simultaneous horizontal and vertical correction.	
Installation	Ceiling/floor, front/rear, free 360-degree installation	
Terminals	SDI IN	BNC x 1: 3G/HD/SD-SDI input
	HDMI IN	HDMI 19-pin x 1 (Deep Color, compatible with HDCP)
	DVI-D IN	DVI-D 24-pin x 1 (DVI 1.0 compliant, compatible with HDCP, compatible with single link only)
	RGB 1 IN	RGB x 1 (BNC x 5): RGB/YpPr/YCbCr/YC/VIDEO
	RGB 2 IN	D-sub HD 15-pin (female) x 1: RGB/YpPr/YCbCr
	SERIAL IN	D-sub 9-pin (female) x 1 for external control (RS-232C compliant)
	SERIAL OUT	D-sub 9-pin (male) x 1 for link control
	REMOTE 1 IN	M3 x 1 for wired remote control
	REMOTE 1 OUT	M3 x 1 for link control (for wired remote control)
	REMOTE 2 IN	D-sub 9-pin (female) x 1 for external control (parallel)
	LAN	RJ-45 x 1 for network connection, 10Base-T, 100Base-TX, compatible with PLink™ (Class 2)
	DIGITAL LINK	RJ-45 x 1 for network and DIGITAL LINK connection, 100Base-TX, compatible with PLink™ (Class 2), HDCP, Deep Color
	Power supply	AC 100–240 V, 50/60 Hz
Power consumption	TBD	
Operation noise*1	TBD	
Cabinet materials	Molded plastic	
Dimensions (W x H x D)	PT-RZ120: 498 x 200*3 x 581 mm (19 19/32" x 7 7/8"*3 x 22 7/8") (with supplied lens) PT-RZ120L: 498 x 200*3 x 538 mm (19 19/32" x 7 7/8"*3 x 21 3/16") (without lens)	
Weight*4	TBD	
Operating environment	Operating temperature: 0–45 °C (32–113 °F)*5, operating humidity: 10–80 % (no condensation)	
Applicable software	Logo Transfer Software, Multi Monitoring & Control Software, Geometry Manager Pro	

Note: PT-RZ120L offers the same performance as PT-RZ120, but comes without a lens.

*1 Measurement, measuring conditions, and method of notation all comply with ISO/IEC 21118: 2012 international standards. Value is average of all products when shipped. *2 Optical axis shift is not supported on the ET-DLE055, and the optical axis is fixed with the ET-DLE030.
*3 With legs at shortest position. *4 Average value. May differ depending on the actual unit. *5 When using the projector at an altitude lower than 2,700 m (8,858 ft) above sea level, and the operating environment temperature becomes 30 °C (86 °F) or higher, the light output may be reduced to protect the projector. When using the projector at an altitude between 2,700 m (8,858 ft) and 4,200 m (13,780 ft), and the operating environment temperature becomes 25 °C (77 °F) or higher, the light output may be reduced to protect the projector.

Optional Accessories

- | | | | |
|---|--|--|--|
| <ul style="list-style-type: none"> ■ Fixed-Focus Lens
ET-DLE030 ■ Zoom Lens
ET-DLE085 / ET-DLE150 /
ET-DLE250 / ET-DLE350 /
ET-DLE450 / ET-DLE055 /
ET-DLE060 | <ul style="list-style-type: none"> ■ Ceiling Mount Bracket
ET-PKD130H (6-axis, for high ceiling)
ET-PKD120H (for high ceiling)
ET-PKD120S (for low ceiling) ■ Projector Mount Bracket
ET-PKD130B | <ul style="list-style-type: none"> ■ Geometry Manager Pro Software Upgrade Kit
ET-UK20 ■ Auto Screen Adjustment Upgrade Kit
ET-CUK10 | <ul style="list-style-type: none"> ■ Early Warning Software
ET-SWA100 Series ■ DIGITAL LINK Switcher
ET-YFB200G ■ Digital Interface Box
ET-YFB100G |
|---|--|--|--|

Rugged SOLID SHINE Laser Projector Extends Maintenance-Free Imaging Brilliance to 20,000 Hours*¹, Leading Class in Low TCO for Professionals



PT-RZ870/L	
Resolution	WUXGA
Brightness	8,500 lm
Contrast	10,000:1

Note: PT-RZ870L offer the same performance as PT-RZ870 respectively, but come without a lens.

High-Quality Pictures and Long-Lasting Reliability

- Combines 1-Chip DLP™ imaging with proprietary SOLID SHINE Laser technology for accurate and immersive pictures at 8,500 lm
- Dynamic Light Control for 10,000:1*² contrast
- Accurate white balance and color reproduction in any projection mode
- High picture quality maintained for very long periods
- Detail Clarity Processor 3 clarifies and enhances the finest details
- System Daylight View 3 optimization for sharp and vivid images in bright environments

Consistently Stable and Reliable Performance

- Dust-resistant projector structure with airtight optical block
- Dual-drive laser optical engine with dual phosphor wheels assures reliable 24/7 operation with light-source failover protection
- Up to 20,000 hours of continuous maintenance-free operation*¹
- Efficient cooling system for stable operation in ambient temperatures of up to 45 °C (113 °F)*³
- High-speed backup input switching minimizes screen blanking during projection

Versatile System Adaptability and Flexible Installation

- Shares optional lenses with Panasonic 1-Chip DLP™ projector family
- Compact body and free 360-degree installation (vertical and horizontal)
- Built-in Geometric Adjustment for projection onto specially shaped screens
- Supports Geometry Manager Pro and optional Upgrade Kit (ET-UK20)
- Auto Screen Adjustment Upgrade Kit (ET-CUK10)
- Direct Power Off function allows projector shutdown from mains

Specifications (Tentative)

Model	PT-RZ870/RZ870L		
DLP™ chip	Panel size	17.0 mm (0.67 in) diagonal (16:10 aspect ratio)	
	Display method	DLP™ chip x 1, DLP™ projection system	
	Pixels	2,304,000 (1920 x 1200) pixels	
Lens	PT-RZ870: Powered zoom (throw ratio 1.7–2.4:1), powered focus F 1.7–1.9, f 25.6–35.7 mm PT-RZ870L: Optional powered zoom/focus lenses		
Light source	Laser diodes laser Class 1 (Class 3R for US models)		
Screen size (diagonal)	1.27–15.24 m (50–600 in), 1.27–5.08 m (50–200 in) with ET-DLE055, 2.54–8.89 m (100–350 in) with ET-DLE030, 16:10 aspect ratio		
Brightness*1	8,500 lm		
Center-to-corner uniformity*1	90 %		
Contrast*1	10,000:1 (Full On/Full Off, Dynamic Contrast Mode: ON)		
Resolution	1920 x 1200 pixels		
Optical axis shift*2	Vertical (from center of screen)	+50 %, -16 % (+40%, -16% with ET-DLE060) (powered)	
	Horizontal (from center of screen)	+30 %, -10 % (+19 %, -10 % with ET-DLE060 / +28 %, -10 % with ET-DLE085) (powered)	
Keystone correction range	Vertical: ±40° (±16° with ET-DLE060, ±22° with ET-DLE085/DLE055, +5° with ET-DLE030), Horizontal: ±15° (±10° with ET-DLE060) (cannot be operated with ET-DLE030)		
Keystone correction range with optional Upgrade Kit ET-UK20	Vertical: ±45° (±16° with ET-DLE060, ±40° with ET-DLE150/DLE250 / supplied lens, ±22° with ET-DLE085/DLE055), Horizontal: ±40° (±10° with ET-DLE060, ±15° with ET-DLE085/DLE055), Up to a total of ±55° during simultaneous horizontal and vertical correction		
Installation	Ceiling/floor, front/rear, free 360-degree installation		
Terminals	SDI IN	BNC x 1: 3G/HD/SD-SDI input	
	HDMI IN	HDMI 19-pin x 1 (Deep Color, compatible with HDCP)	
	DVI-D IN	DVI-D 24-pin x 1 (DVI 1.0 compliant, compatible with HDCP, compatible with single link only)	
	RGB 1 IN	RGB x 1 (BNC x 5): RGB/YpPr/YCbCr/YC/VIDEO	
	RGB 2 IN	D-sub HD 15-pin (female) x 1: RGB/YpPr/YCbCr	
	SERIAL IN	D-sub 9-pin (female) x 1 for external control (RS-232C compliant)	
	SERIAL OUT	D-sub 9-pin (male) x 1 for link control	
	REMOTE 1 IN	M3 x 1 for wired remote control	
	REMOTE 1 OUT	M3 x 1 for link control (for wired remote control)	
	REMOTE 2 IN	D-sub 9-pin (female) x 1 for external control (parallel)	
	LAN / DIGITAL LINK	RJ-45 x 1 for network and DIGITAL LINK connection, 100Base-TX, compatible with PLink™, HDCP, Deep Color	
	Power supply	AC 100–240 V, 50/60 Hz	
	Power consumption	TBD	
Operation noise*1	TBD		
Cabinet materials	Molded plastic		
Dimensions (W x H x D)	PT-RZ870: 498 x 200*3 x 581 mm (19 19/32" x 7 7/8"*3 x 22 7/8") (with supplied lens)		
	PT-RZ870L: 498 x 200*3 x 538 mm (19 19/32" x 7 7/8"*3 x 21 3/16") (without lens)		
Weight*4	PT-RZ870: Approx. 23.2 kg (51.1 lbs.) (with supplied lens)		
	PT-RZ870L: Approx. 22.4 kg (49.4 lbs.) (without lens)		
Operating environment	Operating temperature: 0–45 °C (32–113 °F)*5, operating humidity: 10–80 % (no condensation)		
Applicable software	Logo Transfer Software, Multi Monitoring & Control Software, Geometry Manager Pro		

Note: PT-RZ870L offer the same performance as PT-RZ870 respectively, but come without a lens.

*1 Measured at center area of projector screen. Measurement method is in compliance with ISO/IEC 21118: 2012 international standards. Value is average of all products when shipped. *2 Optical axis shift is not supported on the ET-DLE055, and the optical axis is fixed with the ET-DLE030. *3 With legs at shortest position. *4 Average value. May differ depending on the actual unit. *5 When using the projector at an altitude lower than 2,700 m (8,858 ft) above sea level, and the operating environment temperature becomes 30 °C (86 °F) or higher, the light output may be reduced to protect the projector. When using the projector at an altitude between 2,700 m (8,858 ft) and 4,200 m (13,780 ft), and the operating environment temperature becomes 25 °C (77 °F) or higher, the light output may be reduced to protect the projector.

Optional Accessories

■ Fixed-Focus Lens

ET-DLE030

■ Zoom Lens

ET-DLE085 / ET-DLE150 /
ET-DLE250 / ET-DLE350 /
ET-DLE450 / ET-DLE055 /
ET-DLE060

■ Ceiling Mount Bracket

ET-PKD130H (6-axis, for high ceiling)
ET-PKD120H (for high ceiling)
ET-PKD120S (for low ceiling)

■ Projector Mount Bracket

ET-PKD130B

■ Geometry Manager Pro Software

Upgrade Kit
ET-UK20

■ Auto Screen Adjustment Upgrade Kit

ET-CUK10

■ Early Warning Software

ET-SWA100 Series

■ DIGITAL LINK Switcher

ET-YFB200G

■ Digital Interface Box

ET-YFB100G

Bright SOLID SHINE Laser LCD Projectors Blend High Performance and Low Running Costs for Best Value in Mid-sized Venues



PT-MZ770 Series		
	PT-MZ770/L	PT-MW730/L
Brightness	7,500 lm	
Resolution	WUXGA	WXGA
Contrast	3,000,000:1*1	

Note: PT-MZ770L and PT-MW730L offer the same performance as PT-MZ770 and PT-MW730 respectively, but come without a lens.

Outstanding Brightness and Picture Quality

- SOLID SHINE Laser technology with 3LCD optical engine serves bright, vivid, and detailed pictures
- Up to 7,500 lm brightness delivered from compact and lightweight body
- 3,000,000:1*1 dynamic contrast via digitally modulated laser light source improves text legibility and assists with crisp and accurate pictures
- Available in WUXGA*2 for detailed Full HD video reproduction and high-resolution images, text, and graphics
- Detail Clarity Processor 4 enhances image clarity and sharpness
- Daylight View Basic optimizes pictures for best visibility in bright environments
- DICOM Simulation Mode*3 for medical presentations
- Color Adjustment Function corrects color variations in multi-projector applications

High Efficiency and Low Maintenance

- Laser light source returns 20,000 hours*4 of continuous operation (no exchange required)
- Inorganic LCD panels and inorganic polarizing plates maintain high image quality for extended periods
- Extended 20,000-hour*5 maintenance-free period for reusable Eco Filter*6
- One-way airflow design improves efficacy of lens-assembly sealing to maintain high brightness and picture quality
- Dust-resistant cabinet design improves filter-module and air-intake-duct sealing
- ECO Management System effectively reduces power consumption

Easy Setup and Operation

- DIGITAL LINK/HDMI® support transmission of uncompressed 4K signal (PT-MZ770/L only)
- Powered lens shift, zoom, and focus via remote control
- Supports wireless projection with optional module (ET-WM300)
- Corner Keystone & Curved Screen Correction
- Network function via LAN for stress-free remote operation
- Supports free Multi Monitoring & Control Software
- Incorporates LinkRay™ Light ID Transmission function delivering information to smartphones*7, ideal for signage and exhibition/display applications

*1 With Dynamic Contrast 1/2, Image Mode set to Dynamic. *2 PT-MZ770/L has WUXGA and PT-MW730/L WXGA resolution. *3 This product is not a medical instrument. Do not use for actual medical diagnosis. *4 Around this time, original light source brightness will have decreased by approximately 50%. With IEC62087: 2008 Broadcast content, Dynamic Contrast [2], in environments with 0.15 mg/m³ of particulate matter. Estimated maintenance time varies depending on environment. *5 In environments with 0.15 mg/m³ of particulate matter. Estimated maintenance time varies depending on environment. *6 Eco Filter is designed to be washed and reused twice. If filter is not sufficiently clean after washing with water, replacement is advised. *7 Requires purchase and activation of a LinkRay™ service contract.

Specifications (Tentative)

Model	PT-MZ770/MZ770L		PT-MW730/MW730L
LCD panel	Panel size	19.3 mm (0.76") diagonal (16:10 aspect ratio)	
	Display method	Transparent LCD panel (x 3, R/G/B)	
	Drive method	Active matrix	
	Pixels	2,304,000 (1920 x 1200) x 3, total of 6,912,000 pixels	1,024,000 (1280 x 800) x 3, total of 3,072,000 pixels
Lens	PT-MZ770/MW730: Powered zoom (throw ratio 1.6–2.8 :1), F = 1.7–2.3, f = 26.8–45.5 mm PT-MZ770L/MW730L: Optional powered zoom/focus lenses		
Light source	Laser diode (Class 1) (Class 3R for US models)		
Screen size (diagonal)	1.02–10.16 m (40–400 in), 16:10 aspect ratio 1.52–10.16 m (60–400 in) with the ET-ELW22, 16:10 aspect ratio		
Brightness*1	7,500 lm		
Center-to-corner uniformity*1	90 %		
Contrast	3,000,000:1 (Dynamic Mode/Dynamic Contrast 1/2)		
Resolution	1920 x 1200 pixels		1280 x 800 pixels
Optical axis shift	Vertical (from center of screen)	±67 % (powered) (for supplied lens [ELS20]/ELW20/ELT20/ELT21, ELW22; max. ±60 %, ELW21; cannot use optical axis shift function)	
	Horizontal (from center of screen)	±35 % (powered) (for supplied lens [ELS20]/ELW20/ELT20/ELT21, ELW22; max ±30%, ELW21; cannot use optical axis shift function)	
Keystone correction range*2	Vertical: ±25°, Horizontal: ±30°		Vertical: ±35°, Horizontal: ±35° (Up to a total of ±55° during simultaneous horizontal and vertical correction)
Installation	Horizontal/Vertical, free 360-degree installation		
Terminals	HDMI IN	HDMI 19-pin x 2 (Deep Color, compatible with HDCP), audio signal: Linear PCM (Sampling frequency: 48 kHz/44.1 kHz/32 kHz)	
	RGB 1 IN	BNC x 5 (RGB or YPbPr/YCbCr x 1)	
	RGB 2 IN	D-sub HD 15-pin (female) x 1 (compatible with component input)	
	VIDEO IN	Pin jack x 1 (composite video)	
	MONITOR OUT	D-sub HD 15-pin (female) x 1 (RGB x 1) (compatible with RGB or YPbPr/YCbCr)	
	AUDIO IN	Pin jack x 2 (L-R), M3 stereo mini jack x 2	
	AUDIO OUT	M3 stereo mini-jack x 1 for output	
	SERIAL IN	D-sub 9-pin (female) x 1 for external control (RS-232C compliant)	
	REMOTE 1 IN	D-sub 9-pin (female) x 1 for external control (parallel)	
	REMOTE 2 IN	M3 x 1 for wired remote control	
	LAN	RJ-45 x 1 for network connection, 10Base-T, 100Base-TX, compatible with PLink™ (Class 2)	
	DIGITAL LINK	RJ-45 x 1 for network and DIGITAL LINK connection, 100Base-TX, compatible with PLink™ (Class 2), HDCP, Deep Color	
	Memory Viewer/Pairing	USB (Type A) x 1	
	DC OUT	USB (Type A) x 1, DC 5 V/2 A*3	
Power supply	100–240 V AC, 50/60 Hz		
Power consumption	TBD	TBD	
Built-in speaker	10 W (monaural)		
Operating noise*1	35 dB (NORMAL/ECO Mode), TBD (Quiet Mode)		
Filter	x 1, estimated maintenance time: approx. 20,000 hours*4		
Cabinet materials	Molded plastic (PC + ABS)		
Dimensions (W x H x D)	PT-MZ770/MW730: 560 x 205*5 x 443 mm (22 1/16" x 8 1/16"*5 x 17 7/16") (with supplied lens) PT-MZ770L/MW730L: 560 x 205*5 x 428 mm (22 1/16" x 8 1/16"*5 x 16 27/32") (without lens)		
Weight*6	PT-MZ770/MW730: Approximately 17.1 kg (37 lbs) (with supplied lens) or less PT-MZ770L/MW730L: Approximately 16.3 kg (35.7 lbs) (without lens)		
Operating environment	Operating temperature: 0 °C–45 °C (32 °F–113 °F)*7, operating humidity: 20 %–80 % (no condensation)		
Applicable software/application	Wireless Manager for Windows/Mac, Logo Transfer Software, Multi Monitoring & Control Software, Smart Projector Control, Plug and Share, Wireless Projector Apps for iOS/Android™		

Note: PT-MZ770L and PT-MW730L deliver the same performance as PT-MZ770 and PT-MW730 but respectively come without a lens.

*1 Measurement, measuring conditions, and method of notation all comply with ISO 21118 international standards. *2 With supplied lens. Value differs when correction for both directions is operated. *3 On standby, power supply is available with Quick Startup set to ON or Power Management set to Ready. *4 Under conditions with 0.15 mg/m³ of particulate matter (based on tests by the American Society of Heating, Refrigerating, and Air-Conditioning Engineers [ASHRAE], and the Japanese Building Maintenance Association). Estimated maintenance time varies depending on environment. *5 With legs at shortest position. *6 Average value. May differ depending on models. *7 Brightness is limited at operating temperatures higher than 36 °C (96 °F), and projectors cannot be operated at altitudes higher than 2,700 m (8,858 ft) above sea level.

Optional Accessories

Zoom Lens

ET-ELW20 / ET-ELW22
ET-ELT20 / ET-ELT21/
ET-ELS20*

* Available only in the US and Europe.

Fixed Lens

ET-ELW21

Ceiling Mount Bracket

ET-PKD120H (for high ceiling)
ET-PKD120S (for low ceiling)

Bracket Assembly

ET-PKE301B

Replacement Filter Unit

ET-RFM100

Wireless Module

ET-WM300

Easy Wireless Stick

ET-UW100*

* Availability varies depending on region.

DIGITAL LINK Switcher

ET-YFB200G

Digital Interface Box

ET-YFB100G

Early Warning Software

ET-SWA100 Series

Brilliant High-Contrast Portables Put Picture Quality First with Compact Convenience to Make Life Easy



(Optional)

PT-VW360 Series		
	PT-VW360	PT-VX430
Brightness	4,000 lm	4,500 lm
Resolution	WXGA	XGA
Contrast	20,000:1	

Bright and Clear Video Images

- Outputs 4,500 lm*¹ of brightness from a compact body
- Mechanical Iris enables 20,000:1 dynamic contrast for enhanced text legibility, clearer graphics, and naturally balanced image quality
- WXGA resolution for HD video via PC (PT-VW360 only)
- Daylight View Basic Lite optimizes brightness, color, and contrast for outstanding picture quality in bright rooms

Convenient Function and Low TCO

- Supports optional Panasonic apps for wireless media casting from Android™ and iOS devices*²
- Compatible with Crestron Connected™, AMX® Device Discovery, and PLink™ protocols over LAN for smooth control integration
- Lamp and filter*³ replacement timing extended to 7,000 hours*⁴
- Quiet 29 dB operation in ECO Mode to minimize distractions during presentations
- Efficient ECO modes and environmentally friendly projector design

Easy Operation, Quick Setup

- Corner Keystone Correction image alignment for off-axis projection
- Optional Early Warning Software monitors device status and sends alerts if abnormalities are detected
- 2 HDMI® inputs display digital content from a variety of media players
- Built-in 10 W monaural speaker
- Direct Power Off function allows projector shutdown from mains

Specifications (Tentative)

Model	PT-VW360	PT-VX430	
LCD panel	Panel size	15.0 mm (0.59 in) (16:10 aspect ratio)	16.0 mm (0.63 in) (4:3 aspect ratio)
	Display method	Transparent LCD panel (x 3, R/G/B)	
	Pixels	1,024,000 (1280 x 800) pixels	786,432 (1024 x 768) pixels
Lens	Manual zoom (1.6x) (throw ratio: 1.18–1.90:1), manual focus, F 1.60–1.90, f 15.31–26.24 mm		
Screen size (diagonal)	0.76–7.62 m (30–300 in), 16:10 aspect ratio	0.76–7.62 m (30–300 in), 4:3 aspect ratio	
Resolution	1280 x 800 pixels (Input signals that exceed this resolution will be converted to 1280 x 800 pixels)	1024 x 768 pixels (Input signals that exceed this resolution will be converted to 1024 x 768 pixels)	
Brightness*1	4,000 lm (input signals: PC, lamp power: NORMAL, picture mode: Dynamic, Iris: Off, Daylight View: Off, Auto Power Save: Off)	4,500 lm (input signals: PC, lamp power: NORMAL, picture mode: Dynamic, Iris: Off, Daylight View: Off)	
Lamp	240 W x 1 lamp		
	Lamp replacement cycle	NORMAL: 5,000 hours / ECO: 7,000 hours	
Center-to-corner uniformity*1	85 %		
Contrast*1	20,000:1 (Full On/Off) (input signals: PC, lamp power: NORMAL, picture mode: Dynamic, Iris: On, Daylight View: Off, Auto Power Save: Off)		
Optical axis shift	49:1 (fixed)	9:1 (fixed)	
Keystone correction range	Vertical: ±35° (±30° when using AUTO) (maximum value of WXGA input)	Vertical: ±40° (±30° when using AUTO) (maximum value of XGA input)	
	Horizontal: ±35° (maximum value of WXGA input)	Horizontal: ±30° (maximum value of XGA input)	
Installation	Ceiling/floor, front/rear		
Terminals	HDMI IN	HDMI 19-pin x 2 (compatible with HDCP, Deep Color), audio signal: linear PCM (sampling frequencies: 48 kHz, 44.1 kHz, 32 kHz)	
	COMPUTER 1 IN	D-sub HD 15-pin (female) x 1 (RGB/YpPr/YCbCr)	
	COMPUTER 2 IN / MONITOR OUT	D-sub HD 15-pin (female) x 1 (RGB), (input/output selectable using on-screen menu)	
	VIDEO IN	Pin jack x 1 (Composite VIDEO)	
	AUDIO IN 1	M3 x 1 (L-R x 1)	
	AUDIO IN 2	M3 x 1 (L-R x 1) for audio input or for microphone connection (variable)	
	AUDIO IN 3	Pin jack x 2 (L, R x 1)	
	AUDIO OUT	M3 x 1 (L-R x 1) for output (variable)	
	LAN	RJ-45 x 1 (for network connection, 10BASE-T/100BASE-TX, compliant with PjLink™)	
	SERIAL IN	D-sub 9-pin (female) x 1 for external control (RS-232C compliant)	
USB-Type A	Memory Viewer / Wireless Module (DC 5 V, max 500 mA)		
USB-Type B	For USB Display		
Power supply	AC 100–240 V, 50 Hz/60 Hz		
Power consumption	100–240 V: 320 W (0.5 W when Standby mode set to ECO*2, 1.6 W when Standby mode set to Network, 9.5 W when Standby mode set to NORMAL)		
Built-in speaker	4.0 cm (1 9/16") round shape x 1, output power: 10.0 W (monaural)		
Operating noise*1	37 dB (lamp power: NORMAL), 29 dB (lamp power: ECO)		
Cabinet materials	Molded plastic		
Dimensions (W x H x D)	352 x 98*3 x 279.4*4 mm (13 27/32" x 3 27/32"*3 x 11"*4)		
Weight*5	Approx. 3.3 kg (7.3 lbs)	Approx. 3.3 kg (7.3 lbs)	
Operating environment	Operating temperature: 0–40 °C [32–104 °F] (less than 1,400 m [4,593 ft] above sea level, High Altitude Mode: OFF); 0–30 °C [32–86 °F] (1,400 m [4,593 ft] to 2,000 m [6,562 ft], High Altitude Mode: 1); 0–30 °C [32–86 °F] (2,000 m [6,562 ft] to 2,400 m [7,874 ft], High Altitude Mode: 2)		
	Operating humidity: 20–80 % (no condensation)		
Applicable software	Multi Monitoring & Control Software, Logo Transfer Software, Presenter Light for Windows, Wireless Projector Apps for iOS / Android™		

*1 Measurement, measuring conditions, and method of notation all comply with ISO 21118 international standards. *2 When the Standby mode is set to ECO, network functions such as power on over the LAN network will not operate. Also, only certain commands can be received for external control using the serial terminal. *3 With legs retracted to minimum. *4 Including protruding parts. *5 Average value. May differ depending on the actual unit.

Optional Accessories

■ High-Ceiling Mount Bracket
ET-PKL100H

■ Replacement Lamp Unit
ET-LAV300

■ Wireless Module
ET-WML100

■ Early Warning Software
ET-SWA100 Series

■ Low-Ceiling Mount Bracket
ET-PKL100S

■ Replacement Filter Unit
ET-RFV300

■ D-sub/S-VIDEO Conversion Cable
ET-ADS5

■ Bracket Assembly
ET-PKV400B

Self-Contained EQ1 Series Displays Deliver High-Impact Images at 4K Resolution with Unbeatable Cost-to-Performance and Reliability



EQ1 Series						
	TH-86EQ1	TH-75EQ1	TH-65EQ1	TH-55EQ1	TH-50EQ1	TH-43EQ1
Screen Size	86-inch	75-inch	65-inch	55-inch	50-inch	43-inch
Brightness	350 cd/m ²					
Contrast	1400:1	1200:1	4000:1			
LCD Panel	IPS			VA		
Resolution	4K (3840 x 2160)					

Stylish Design with Excellent Visibility

- 4K Ultra HD panels express texture and detail for clear and natural images
- Efficient high-visibility panel with 350 cd/m² brightness
- IPS panel* delivers clear off-axis visibility and accurate color reproduction
- Reliable and cost-effective visual communication solution for retail, public spaces, showrooms, meeting rooms, and classrooms
- Narrow bezel-width of 15.2 mm (L/R) maximizes screen area relative to display size for high-impact signage (TH-86EQ1)
- Slim 61 mm depth enables non-intrusive wall-mounting in showrooms and retail spaces (TH-43EQ1)

Intuitive and Flexible Signage

- Content Management Software for automated signage playback with scheduling function
- Built-in USB media player enables 4K video and still-image playback via USB without Set-top Box (STB) or PC
- USB media player features synchronized playback on multiple displays via USB and LAN
- USB cloning function allows settings to be copied and shared between displays
- Free Multi Monitoring & Control Software to monitor and control up to 2,048 devices over LAN from a single PC
- Optional ET-SWA100 Series Early Warning Software to monitor device status, operation history, and send alerts if abnormalities are detected

Wide Connectivity for Professional Use

- Supports 4K/60p video input signals via a 2 x HDMI® (HDCP 2.2, CEC capability)
- Supports DVI-D, PC In, Video In, and USB inputs
- Supports professional interfaces (LAN, RS-232C) for external control
- IR (Infrared) In/Out function for simultaneous control of multiple displays in daisy-chain configuration
- 5 V/2 A charging USB terminals to power media streaming devices
- Supports LAN control with AMX or Crestron Connected™ compatibility
- 10 W + 10 W built-in speakers

* TH-86EQ1/TH-75EQ1 only.

Specifications (Tentative)

Model	TH-86EQ1	TH-75EQ1	TH-65EQ1	TH-55EQ1	TH-50EQ1	TH-43EQ1
Screen size (diagonal)	86-inch (2175 mm)	75-inch (1893 mm)	65-inch (1639 mm)	55-inch (1388 mm)	50-inch (1258 mm)	43-inch (1080 mm)
Aspect ratio	16:9					
Panel type	IPS Panel/E-LED			VA Panel/D-LED		
Effective display area (W x H)	1895 x 1065 mm (74.6" x 41.9")	1649 x 927 mm (64.9" x 36.5")	1428 x 803 mm (56.2" x 31.6")	1209 x 680 mm (47.6" x 26.7")	1095 x 616 mm (43.1" x 24.2")	941 x 529 mm (37.0" x 20.8")
Resolution	3840 x 2160					
Brightness (typ.)	350 cd/m ²					
Contrast ratio	1400:1	1200:1	4000:1			
Response time	8 ms (G to G)					
Viewing angle (CR≥10)	178 °					
Terminals	VIDEO In	4-pole Mini Jack (M3) x 1				
	HDMI In	HDMI TYPE-A Connector x 2				
	DVI-D In/Audio In (L/R)	DVI-D 24-pin x 1/ Stereo Mini Jack (M3) x 1 (Shared with PC In)				
	PC In/Audio In (L/R)	Mini D-sub 15-pin x 1/ Stereo Mini Jack (M3) x 1 (Shared with DVI-D In)				
	USB	USB Connector (TYPE A) x 1, DC 5 V/2 A (USB 3.0 supported)				
	Serial	D-sub 9-pin x 1, RS-232C Compatible				
	LAN	RJ45 x 1, 10 BASE-T / 100 BASE-TX / 1000 BASE-T (TBD), Compatible with PjLink™				
IR In/Out	Mini Jack (M3) x 1 / x 1					
Built-in speaker	20 W [10 W + 10 W]					
Power requirements	110–127 V AC, 50/60 Hz, 220–240 V AC, 50/60 Hz					
Power consumption	TBD					
Power off condition	Approx. 0.3 W					
Standby condition	Approx. 0.5 W					
Dimensions (W x H x D)	1928 x 1099 x 76 mm (75.9" x 43.3" x 3.0")	1681 x 959 x 77 mm (66.2" x 37.8" x 3.1")	1459 x 835 x 82 mm (57.5" x 32.9" x 3.3")	1239 x 712 x 62 mm (48.8" x 28.1" x 2.5")	1123 x 647 x 68 mm (44.3" x 25.5" x 2.7")	969 x 560 x 61 mm (38.2" x 22.1" x 2.4")
Bezel width	15.2 mm (all) (0.60")	14.8 mm (all) (0.59")	13.9 mm (T/R/L) (0.55"), 14.9 mm (B) (0.59")	12.6 mm (T/R/L) (0.50"), 14.5 mm (B) (0.58")	11.9 mm (T/R/L) (0.47"), 14.4 mm (B) (0.57")	11.9 mm (T/R/L) (0.47"), 14.9 mm (B) (0.59")
Weight	64 kg (141.1 lbs.)	55 kg (121.3 lbs.)	24 kg (53.0 lbs.)	16 kg (35.3 lbs.)	13 kg (28.7 lbs.)	8.7 kg (19.2 lbs.)
Wall-hanging pitch	600 x 400 mm (23.6" x 15.7")			400 x 400 mm (15.7" x 15.7")		
Operating environment	TBD					
Applicable software	Multi Monitoring & Control Software, Content Management Software					

Optional Accessories

■ Pedestal

TY-ST75PE9 (for 75")
TY-ST55PE9 (for 65")
TY-ST43PE8 (for 55", 50", 43")

■ Early Warning Software

ET-SWA100 Series

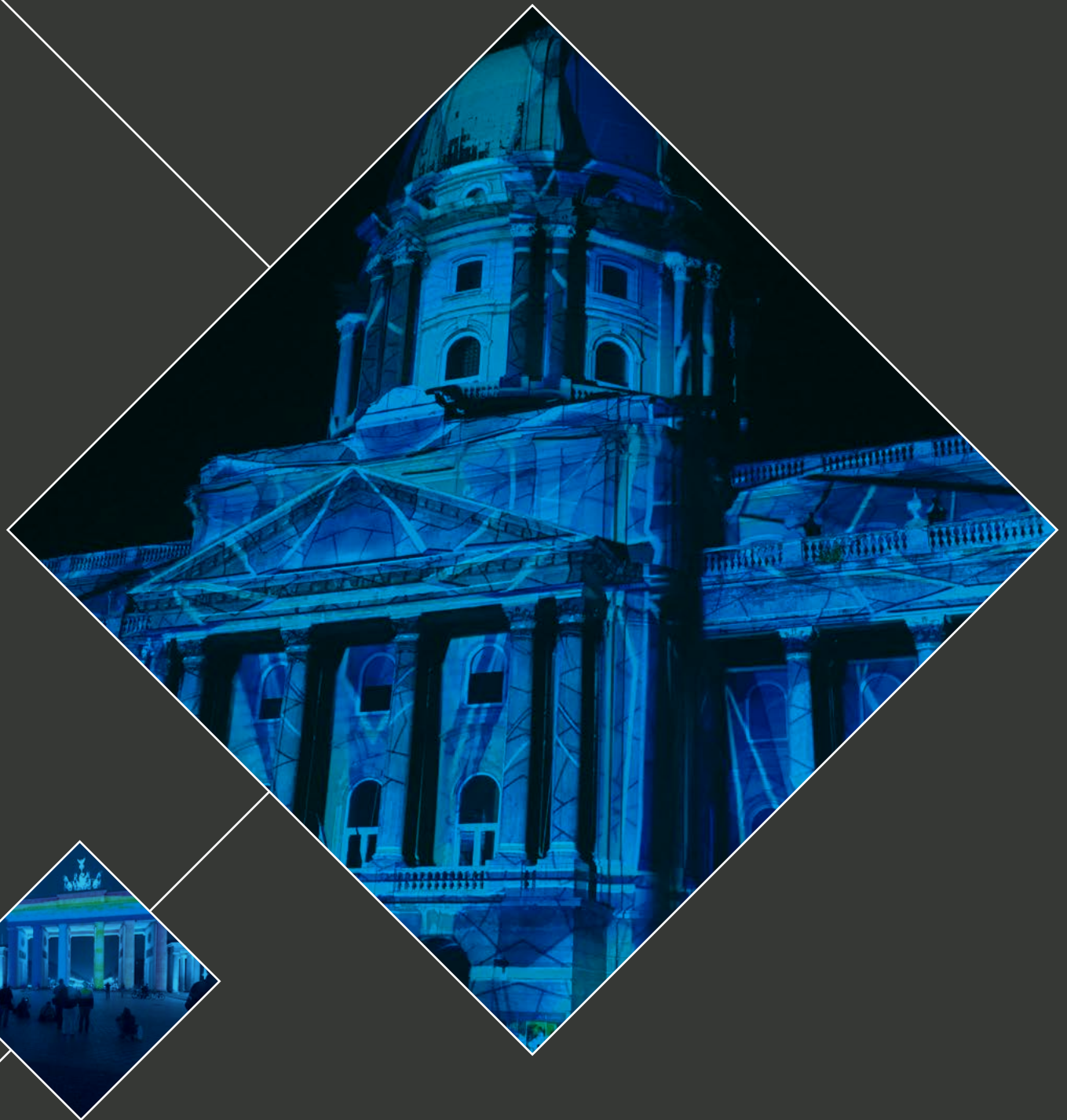
■ Auto Display Adjustment Upgrade Kit

TY-VUK10

MEMO

Panasonic

BUSINESS



Weights and dimensions shown are approximate. Specifications and appearance are subject to change without notice. Product availability differs depending on region and country. This product may be subject to export control regulations. DLP, DLP logo and DLP Medallion logo are trademarks or registered trademarks of Texas Instruments. The terms HDMI and HDMI High-Definition Multimedia Interface, and the HDMI Logo are trademarks or registered trademarks of HDMI Licensing Administrator, Inc. in the United States and other countries. PJLink™ is a registered trademark or pending trademark in Japan, the United States, and other countries and regions. All other trademarks are the property of their respective trademark owners. © 2018 Panasonic Corporation. All rights reserved.

business.panasonic.eu
business.panasonic.eu/ISE2018

Panasonic System Communications Company Europe, a Division of Panasonic Marketing Europe GmbH, Hagenauer Straße 43, 65203 Wiesbaden, Germany.