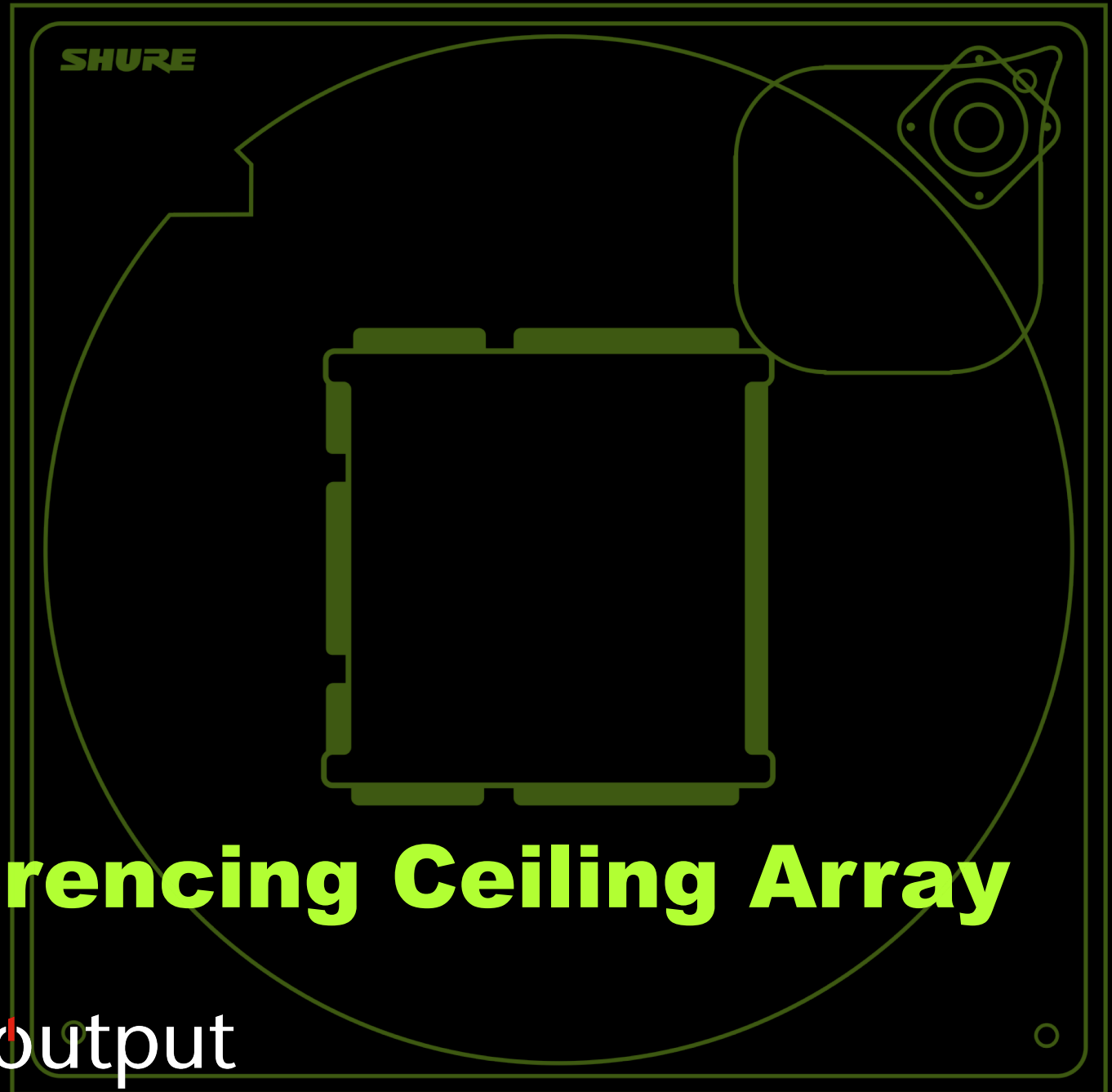


SHURE

MXA902

Integrated Conferencing Ceiling Array



output

Professional audio, video & lighting



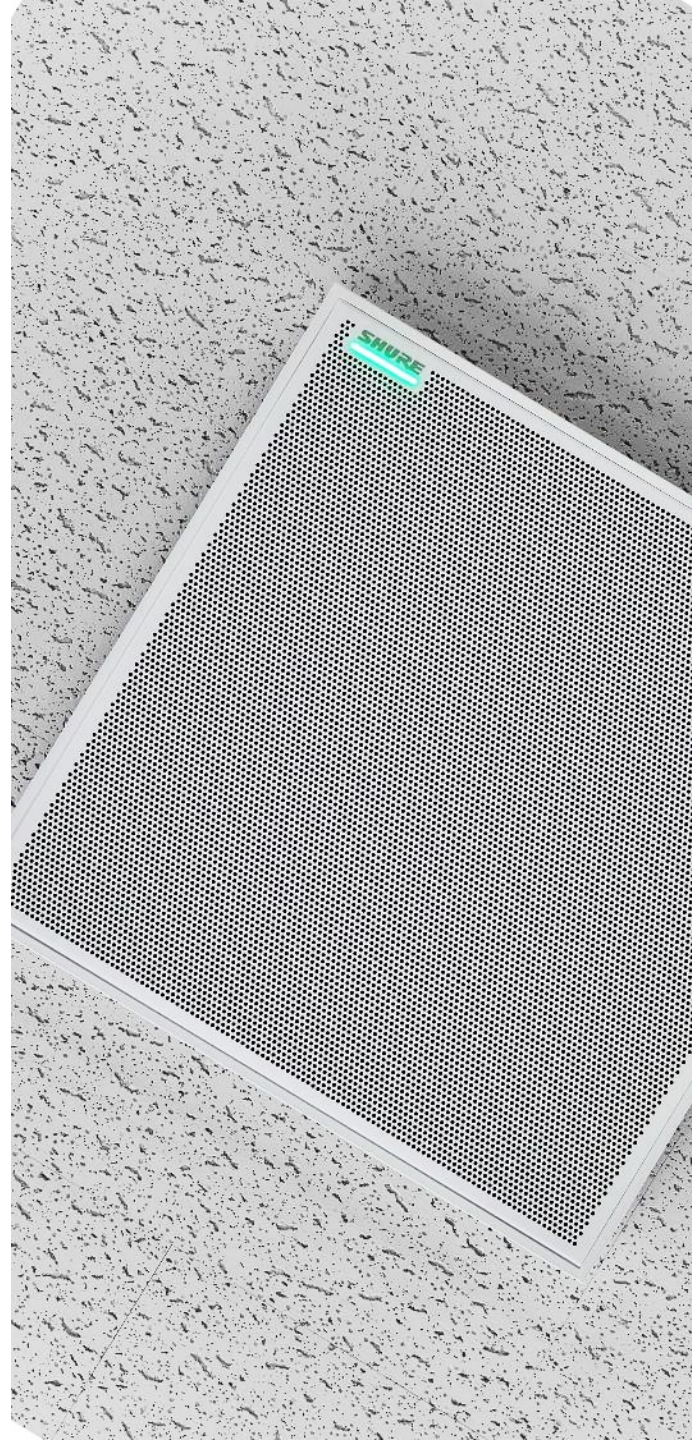
Microflex[®] Advance[™] The Gold Standard

Since its launch in 2016, the Microflex[®] Advance[™] portfolio has redefined and set the industry benchmark for array technology and superior audio performance.

Chosen by tens of thousands of customers around the world, each MXA offering has won numerous industry awards for **technical and design superiority**. From the MXA310 to the new flagship MXA920, Shure MXA continues to establish the bar for innovation.



reddot design award
winner 2018



SHURE

MXA Innovations

MXA Microphones

2016

Introduction:

Microflex® Advance™
Array Microphones:

- **MXA910** Ceiling Array
- **MXA310** Table Array

MXA710 Linear Array Microphone

2020

New Form Factor:

Sleek 2ft and 4ft options designed
for ceiling, wall, and table-mounting.

Next MXA Innovation

2023

Reinventing Ceiling
Audio once again...

MXA910 with IntelliMix®

2019

Evolution:

Firmware update adds
Autofocus™ and IntelliMix
DSP technology.

MXA920 Ceiling Array

2022

Next Generation Array:

Automatic Coverage™
Technology redefines
streamlined setup and
deployment

SHURE
MICROFLEX
ECOSYSTEM
EXPERIENCE. PRECISION.

output

Professional audio, video & lighting

SHURE

The Future Of Work Continues To Evolve...



Frequent Customer Demands

- **More intuitive operation** with no advanced training required.
- **Streamlined installation with a familiar form factor** that's compatible with small to medium sized meeting rooms.
- Low profile, ceiling mounted audio solution for a **superior, more equitable meeting experience** for all participants when compared to wall- or table-based all-in-one devices.
- **Reduced “technology clutter”** on meeting room walls and tables to maintain a **sleek and elegant room aesthetic**.
- **Certification and proven compatibility** with leading collaboration platforms.

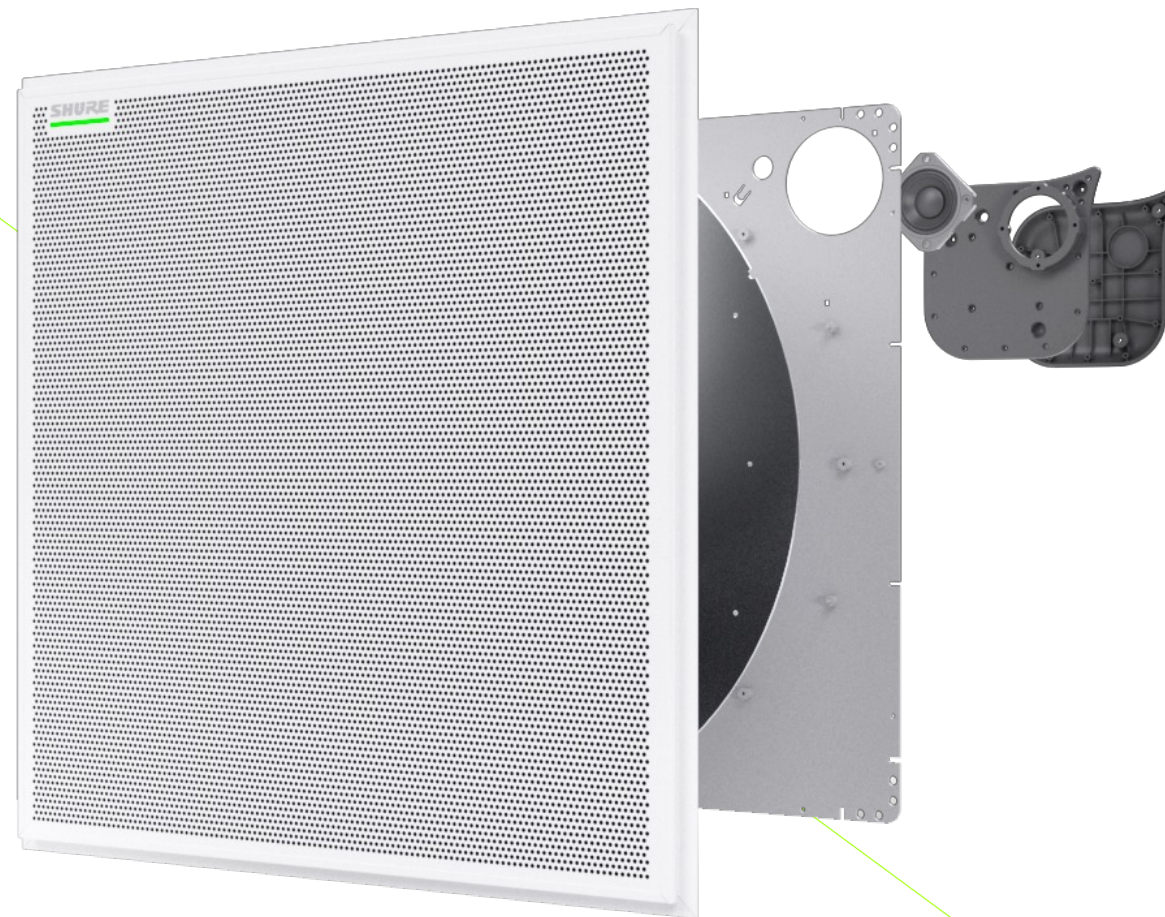
SHURE

MXA902 **Integrated Conferencing** **Array Microphone**

The MXA902 combines a **next generation array microphone**, an integrated **wide-dispersion loudspeaker** plus **onboard IntelliMix® DSP** in a **single ceiling-mount unit**.

Unlike wall or table-based all-in-one devices, the ceiling mounted MXA902 provides **more consistent sound quality** for every participant in the room, while also maintaining a **clean and clutter-free collaboration environment**.

Certified for use with both Zoom Rooms and Microsoft Teams Rooms, the MXA902 is the ideal **complete premium audio solution for AV Conferencing in small to medium sized meeting spaces**.



SHURE
MICROFLEX
ECOSYSTEM
EXPERIENCE PRECISION



SHURE

Why It's Better For You

IT Manager



One and Done

Single in-ceiling device enables quality collaboration, with audio centered over in-room participants while keeping the table clear of technology clutter.



Certified for Microsoft Teams and Zoom

Seamless integration with leading collaboration platforms and third-party systems.



Secure Communication

Provides encrypted communication between Shure Microflex® Ecosystem devices within the room.



SHURE

Why It's Better For You

Systems Integrator



Streamlined Deployment

All-in-one, low-profile design that's simple to setup -- outfitting more rooms in less time.



Premium Sound for More Rooms

Revisit client spaces not previously considered with better sonic performance than competitive wall or table-based solutions.



Specify with Confidence

The MXA902 joins the Microflex[®] Ecosystem portfolio, providing another MXA innovation for you and your customers

SHURE

The Technology



Integrated Design

A complete audio solution for small and medium sized rooms that's ready to go, out of the box



Single Zone Automatic Coverage™ Technology

Capture every talker within a 20' x 20' space with minimal configuration



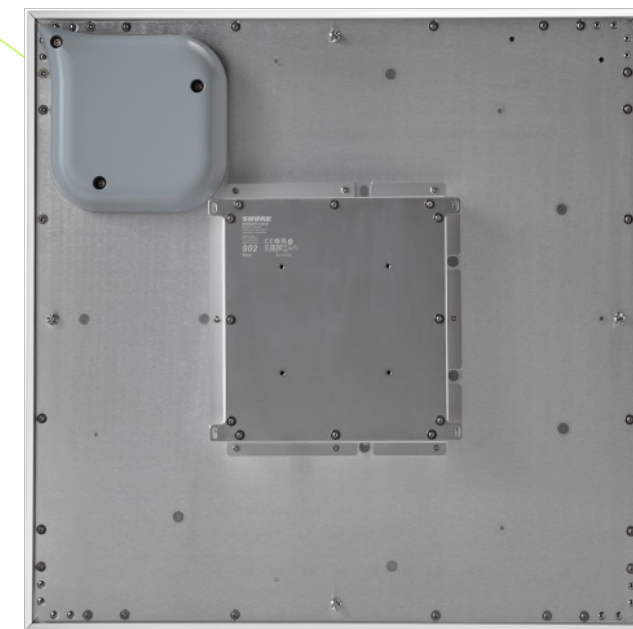
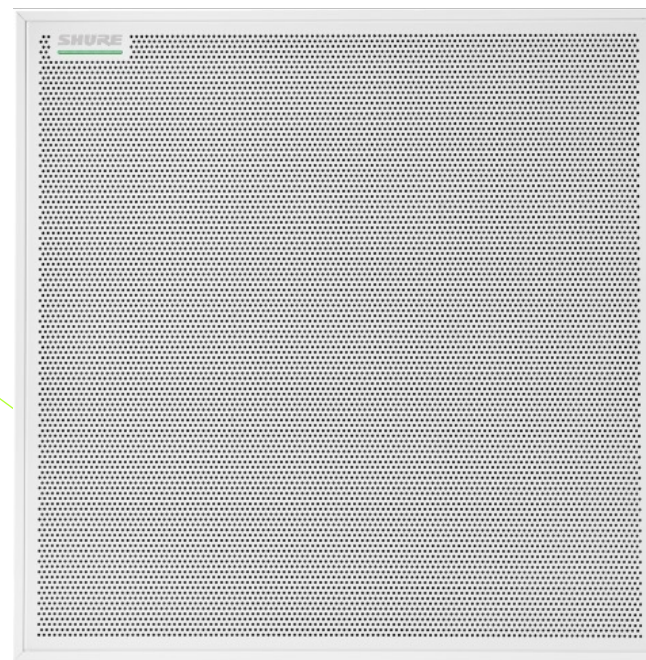
High Quality Loudspeaker

Low profile, wide-dispersion 2.5" driver for clear, intelligible far end speech reproduction



Onboard IntelliMix® DSP

Includes all the digital signal processing needed for noise- and echo-free AV conferencing audio, including Acoustic Echo Cancellation and Noise Reduction.



SHURE

And More...



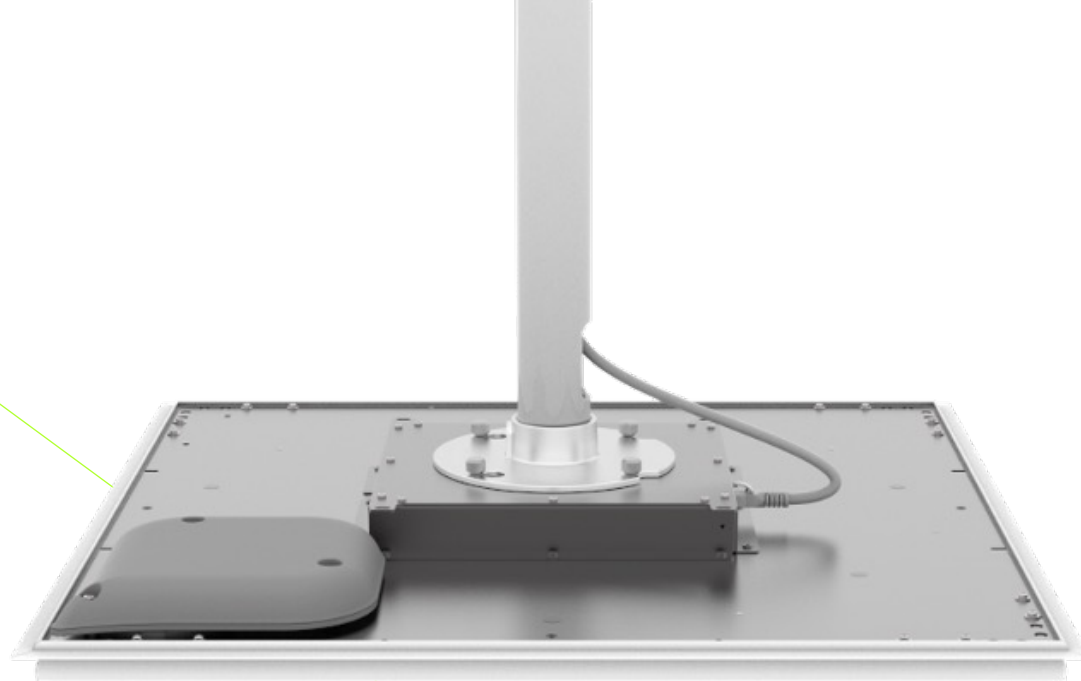
Flexible Networking

Digital audio, PoE+ power, and control data use Dante™ or AES67 to coexist on the same network as enterprise applications. Command strings enable integration with third-party systems for room control.



Confident & Secure Communication

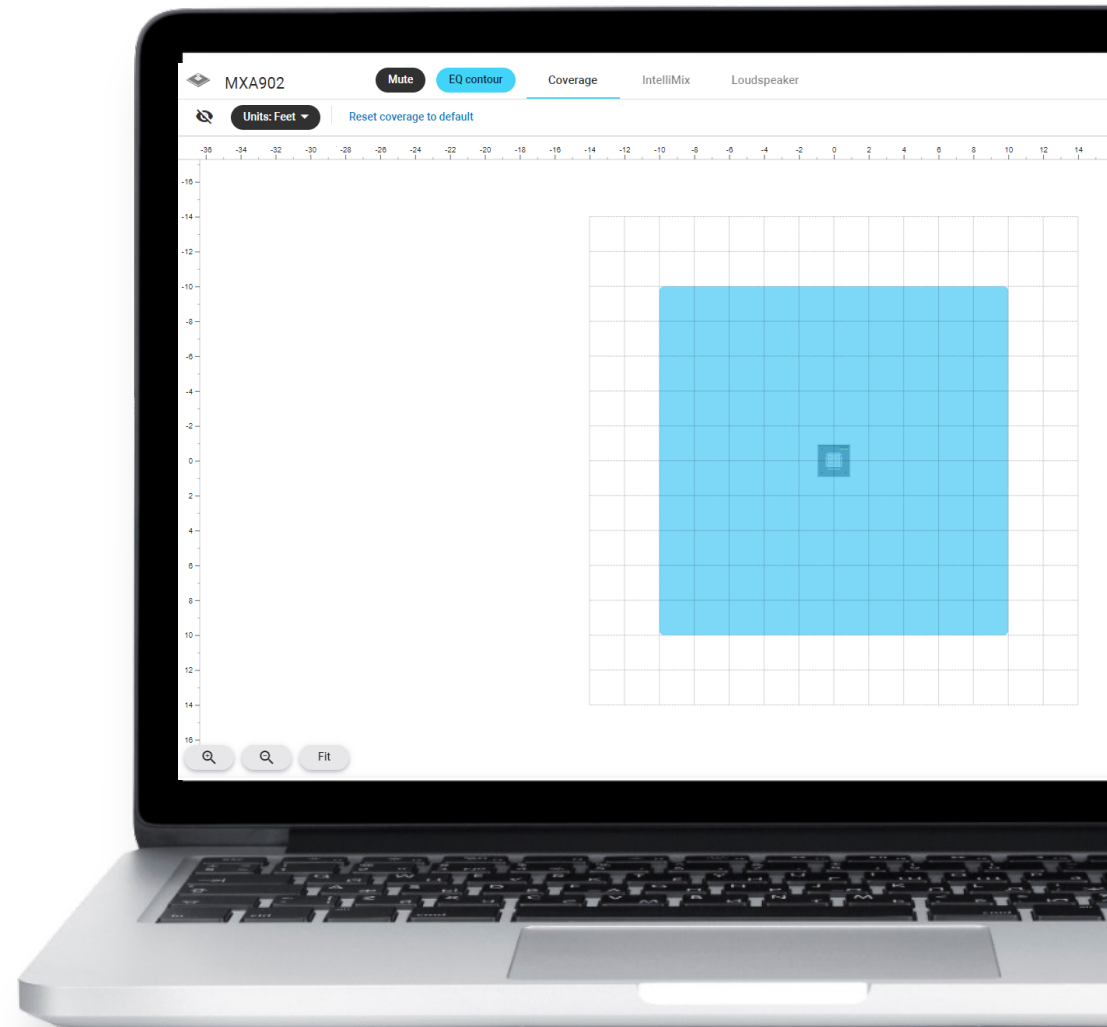
Shure Audio Encryption keeps audio content protected between the MXA902 and other Shure Microflex® Ecosystem devices in the room.





Single Zone Automatic Coverage

Out of the box, the MXA902 provides Single Zone Automatic Coverage of a **20 x 20 ft (6 x 6 m) coverage area** centered over the mic, effectively providing full small to medium room coverage with minimal setup time and effort.

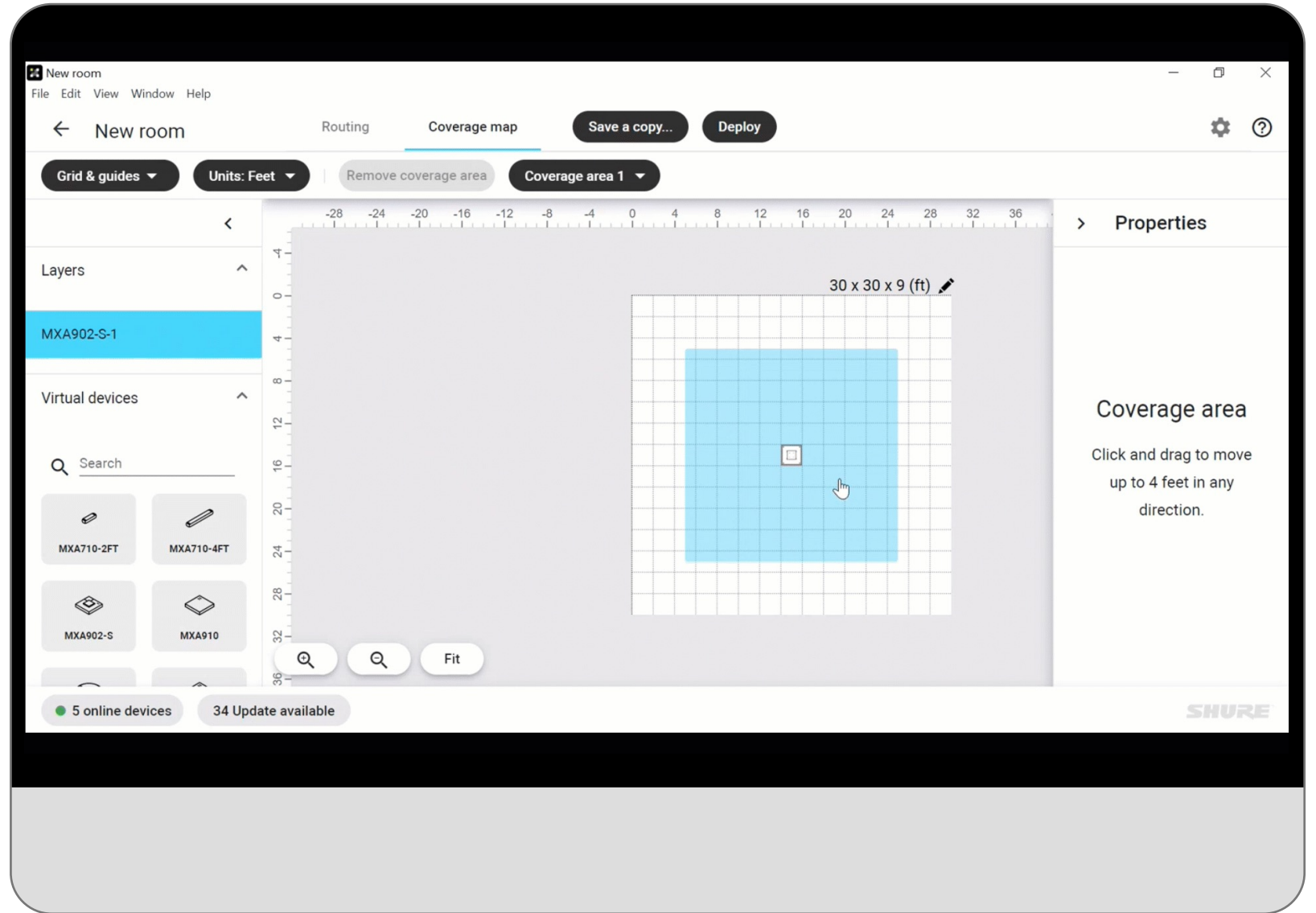


MXA902 Software Control

Coverage zone can be adjusted

+/- 4 ft

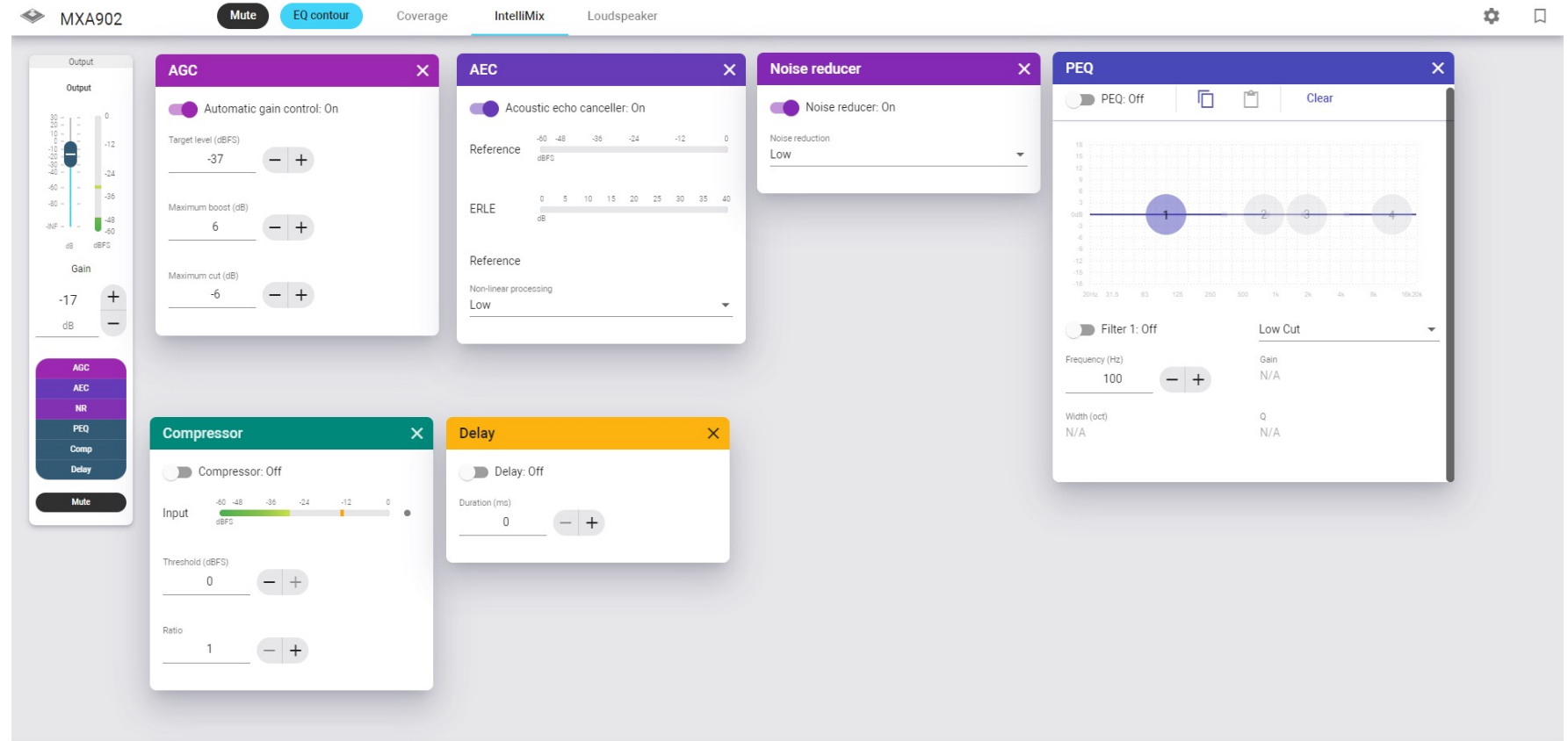
in any direction to account for
array installation constraints





Onboard IntelliMix[®] DSP

The MXA902 provides a **single channel Automix output** for streamlined configuration to the collaboration platform of choice.



The control interface shows the Automix output controls with gain, mute, and IntelliMix[®] DSP settings.



MXA902 Loudspeaker Control

The screenshot displays the MXA902 Loudspeaker Control interface. At the top, there are tabs for 'Mute', 'EQ contour', 'Coverage', 'IntelliMix', and 'Loudspeaker'. The 'Loudspeaker' tab is active. The interface is divided into several sections:

- Speaker Input 1 & 2:** Two channels with 'Dante channel name' fields and 'Gain' controls (0 dB).
- Speaker output:** A section with 'Dante channel name' and 'Gain' (-12 dB).
- Delay - Speaker output:** A panel with a 'Delay: Off' toggle and a 'Duration (ms)' control set to 0.
- Compressor - Speaker output:** A panel with a 'Compressor: Off' toggle, an 'Input' level control (-50 dBFS), a 'Threshold (dBFS)' control (0), and a 'Ratio' control (1).
- Signal generator:** A panel with a 'Play' button, 'Waveform mode' set to 'Pink noise', 'Gain (dB)' (-0.6), and 'Frequency (Hz)' (1000).
- PEQ - Speaker output:** A panel with a 'PEQ: Off' toggle, a 4-band PEQ frequency response graph, and a 'Filter 1: Off' section with 'Frequency (Hz)' (100) and 'Low Cut' options.

Loudspeaker is automatically the AEC reference (cannot be changed)

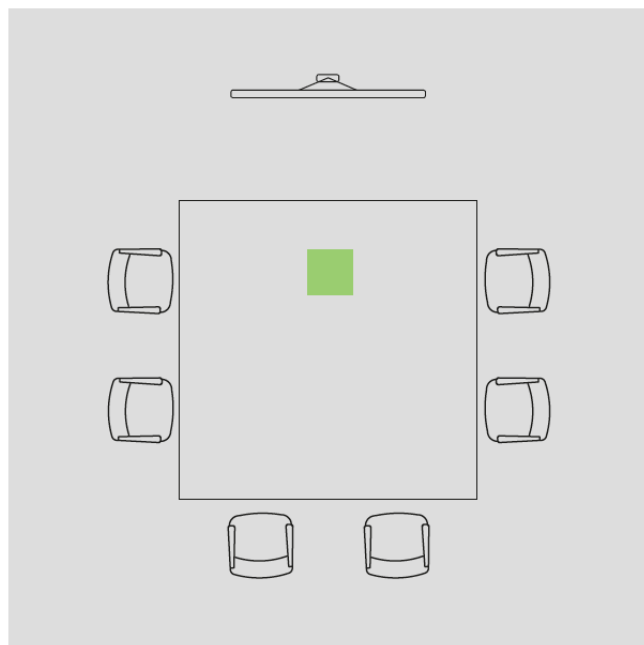
Adjustable speaker output options

4-band PEQ

Built-in signal generator

SHURE

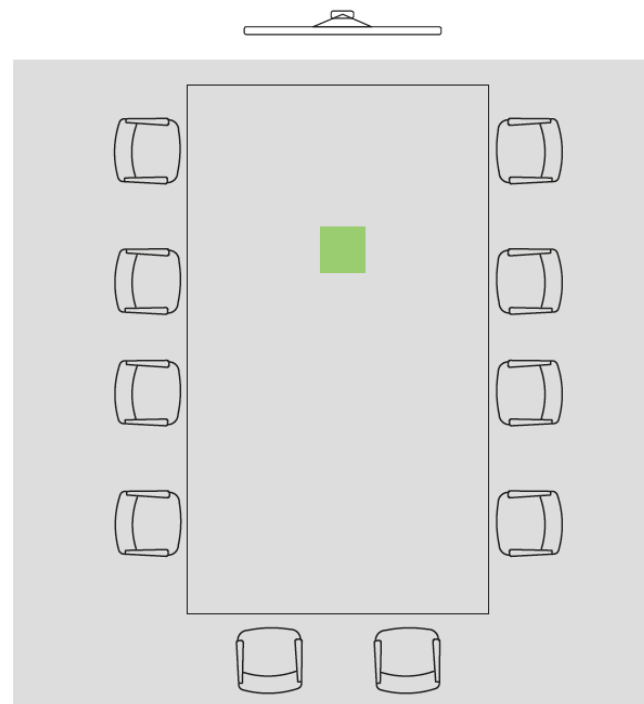
MXA902 Coverage Areas Examples



Small Conference Room

6 Chairs
1 Square Table

1 MXA902 Array



Medium Conference Room

10 Chairs
1 Rectangular Table

1 MXA902 Array

SHURE

Choosing The Right **MXA Array**

MXA902

MXA710

MXA920

Audio Outs	Single Automix Out	Up To 4 or 8 Direct Outs / Single Automix Out	Up To 8 Direct Outs / Single Automix Out
Coverage	Single-Zone Automatic Coverage	Steerable Coverage	Single / Multi-Zone Automatic Coverage
Design / Colors	2ft or 60cm Square / White	2ft or 4ft Lengths / White, Black, Aluminum	2ft or 60cm Square / White 2ft Round / White, Black Aluminum
Applications	AV Conferencing (where only one mic is needed)	AV Conferencing	AV Conferencing, Camera Tracking, Voice Lift, Sound Reinforcement
Target Room Sizes	Small / Medium Conference Room	Any Size Conference Room	Any Size Conference, Higher Ed, Training Room and more
Certifications	Microsoft Teams / Zoom Rooms	Microsoft Teams	Microsoft Teams / Zoom Rooms
Loudspeaker	Integrated	Requires Outboard	Requires Outboard


 The logo for 'output' features the word in a lowercase, white, sans-serif font. A small red vertical bar is positioned to the left of the letter 'o'.

Professional audio, video & lighting

SHURE

Optimized for AV Conferencing

The MXA902 captures and reproduces speech naturally for a high-quality collaboration experience



Certification & Tested Compatibility

MXA902 is certified for both Microsoft Teams and Zoom Rooms and compatible with other popular collaboration platforms.



Echo- & Noise-Free Audio

Onboard IntelliMix[®] DSP provides a single channel of high-quality, AV conferencing-ready audio. No external DSP required!





MXA902 Mounting Options



Drop Ceiling



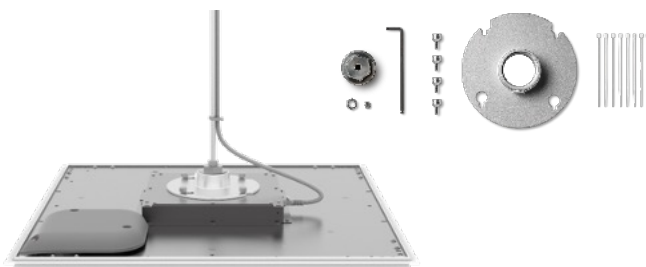
On Ceiling

A900-CM Ceiling Mount



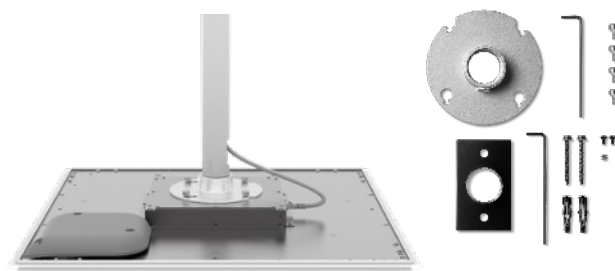
In Hard Ceiling

A910-HCM Hard Ceiling Mount



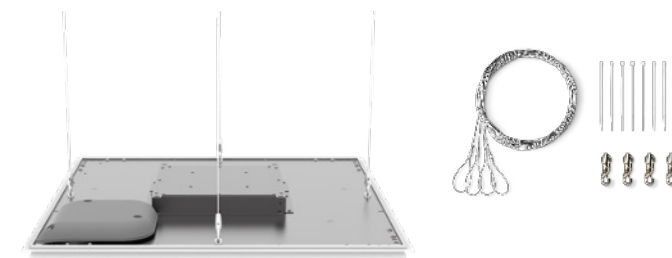
Threaded Rod Suspension

*A900-PM-3/8IN 3.8" Threaded Rod Adapter
(Threaded rod not included)*



Pole Mounting

*A900-S-PM Pole Mount Kit
(Pole not included)*



Cable Suspension

A900-S-GM Cable Suspension Kit

SHURE
MICROFLEX
ECOSYSTEM
EXPERIENCE PRECISION



Certified for
Microsoft Teams

CISCO
Partner
Solution Partner

works with
Google Meet

zoom Certified

output
Professional audio, video & lighting

Part of an Ecosystem of Solutions

Endlessly flexible,
for the most demanding spaces.

From microphones to DSPs to loudspeakers, the Shure Microflex[®] Ecosystem offers a complete portfolio of networked audio solutions that can be precisely tailored to your needs, for best in-class collaboration experiences in any room.

All designed to work together, and complete with add-on solutions from our certified Technology Partners.

+ **Microphones:** MXA

+ **DSP:** IntelliMix

+ **Collaboration:** Technology Partners

+ **Camera:** Technology Partners



Top Feature Comparison

**MXA902
vs.
MXA920
Specs at a
glance**

Spec/Feature	MXA902	MXA920
Room Coverage	20' x 20' only	30' x 30' (default)
Setup/Configuration Required	Minimal	Minimal Setup - or - Fully Customizable
Automatic Coverage	Single Zone	Multi Zone
Next Generation Array Architecture	Yes	Yes
Integrated Loudspeaker	Yes	No
Sound Reinforcement	No	Yes
Advanced Camera Tracking Commands	No	Yes
Audio Output	1 Automix	1 Automix, Up to 8 discrete channels
Form Factors	Square (US / 60CM)	Square (US / 60CM), Round
Available Colors (all paintable)	White (US / 60CM)	White (Square US / 60CM, Round). Black (Round only), Aluminum (Round only)